

SV053

- Full European Dimension
- High Mileage
- Excellent Grip in Wet Conditions
- Quiet and Comfortable ride



SIZES AND DIMENSIONS

Size	LI	SS	P.R.	OD	SW	NSD	TW	Rim (inch)
195/65R16C	104/102	R	8	658	201	9.5	167	6.0
205/65R16C	107/105	T	8	672	209	9.5	173	6.0
215/65R16C	109/107	R	8	686	221	9.8	184	6.5
225/65R16C	112/110	R	8	698	228	9.8	190	6.5
235/65R16C	115/113	R	8	712	240	9.8	204	7.0
175/75R16C	101/99	R	8	668	177	9.0	140	5.0
185/75R16C	104/102	R	8	684	184	9.5	146	5.0
195/75R16C	107/105	R	8	698	196	9.5	156	5.5
205/75R16C	110/108	R	8	714	203	9.5	173	5.5
215/75R16C	113/111	R	8	728	216	9.8	184	6.0
225/75R16C	116/114	R	8	744	223	9.8	190	6.0
195R15C	106/104	R	8	690	198	9.5	158	5.5
195/70R15C	104/102	R	8	658	201	9.5	167	6.0
205/70R15C	106/104	R	8	669	209	9.5	174	6.0
215/70R15C	109/107	R	8	683	221	9.5	178	6.5
225/70R15C	112/110	R	8	697	228	9.8	184	6.5
185R14C	102/100	Q	8	650	188	10.5	132	5.5
195R14C	106/104	Q	8	666	198	10.5	150	5.5
175/65R14C	90/88	T	6	586	174	9.0	138	5.0
165/70R14C	89/87	R	6	586	174	9.0	138	5.0
155R12C	88/86	P	8	550	157	7.0	117	4.5



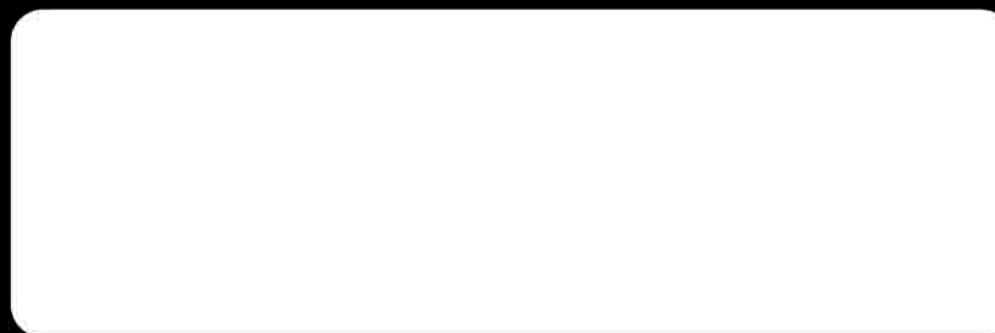
19 Lok Yang Way, Jurong, Singapore 628635
 Tel: +65 6268 3111 • Fax: +65 6264 0148
 Email: sales@sumotire.com • Website: www.sumotire.com



ST-05A
 SILENCE • COMFORT • PERFORMANCE



19 Lok Yang Way, Jurong, Singapore 628635
 Tel: +65 6268 3111 • Fax: +65 6264 0148
 Email: sales@sumotire.com
 Website: www.sumotire.com



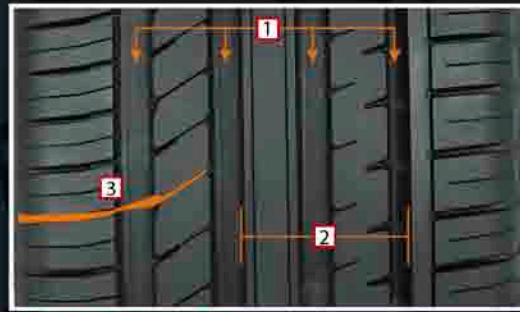
Authorized Distributor

*Sumo Firenza – Not available for sale in the USA.

1921-01-0

WWW.SUMOTIRE.COM

ST-05A



PERFORMANCE FEATURES

Excellent Control For Shorter Braking Distance (Dry Braking)

- Rigid center rib
- More effective grip with greater contact area on braking

Excellent Grip For Short Braking Distance (Wet Braking)

- 4 wide grooves provide faster water drainage
- Greater number of lateral sipes and slots
- Improved triple polymeric compound

Precision Steering Maximum Stability and Exceptional Handling

- Asymmetrical tread ribs
- Rigid center rib and outside shoulder
- Semi-flexible outer rib for cornering stability

Reduced Noise Level For a Quiet and Comfortable Drive

- Improved pitch arrangement
- Optimised Damping effect from tread cap/belt system
- Tapered Sipe System

Reduced Rolling Resistance For Fuel Economy

- Improved belt construction
- Increased polymer to filler ratio

TREAD DESIGN

Shoulder Groove:

1. Wide and straight grooves

Tread Center Area:

2. Optimized rigid center rib and flexible interim rib

Shoulder Area:

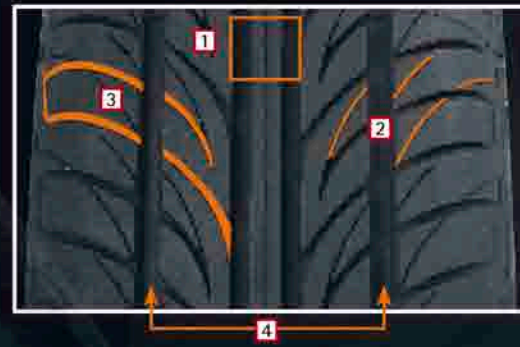
3. Numbers of lateral sipes and slots.

SIZES AND DIMENSIONS

Sizes	LI	SS	XL/Std	MFS	Inflated Tire Dimension				Measuring Rim (Inch)
					OD (mm)	SW (mm)	NSD (mm)	TW (mm)	
185/55R15	82	V	Std	Y	585	194	7.6	172	6.0
195/55R15	85	V	Std	Y	595	201	7.8	178	6.0
205/55R16	94	W	XL	Y	633	214	7.8	192	6.5
215/55R16	97	W	XL	Y	642	226	7.8	204	7.0
215/55R17	98	W	XL	Y	668	229	7.8	204	7.0
225/55R16	99	W	XL	Y	655	231	8.0	210	7.0
225/55R17	101	W	XL	Y	681	233	8.0	212	7.0
195/50R15	82	V	Std	Y	577	201	7.8	178	6.0
205/50R16	87	W	Std	Y	613	214	7.8	190	6.5
205/50R17	93	W	XL	Y	638	214	7.8	190	6.5
215/50R17	95	W	XL	Y	649	226	7.8	200	7.0
225/50R17	98	W	XL	Y	659	233	8.0	204	7.0
235/50Zr18	101	W	XL	Y	694	245	8.0	220	7.5
205/45Zr16	87	W	XL	Y	590	208	7.8	190	7.0
205/45Zr17	88	W	XL	Y	618	208	7.8	193	7.0
215/45Zr17	91	W	XL	Y	626	218	7.8	200	7.0
225/45Zr17	94	W	XL	Y	634	225	8.0	210	7.5
235/45Zr17	97	W	XL	Y	644	236	7.8	214	8.0
205/40Zr17	84	W	XL	Y	596	212	7.8	196	7.5
215/40Zr17	87	W	XL	Y	604	218	7.8	197	7.5
245/40R17	95	W	XL	Y	628	249	8.0	210	8.5
245/45R17	99	W	XL	Y	649	245	8.0	210	8.0
225/40Zr18	92	W	XL	Y	638	230	7.8	210	8.0
235/40Zr18	95	W	XL	Y	645	243	8.0	220	8.5
225/45R18	95	W	XL	Y	659	225	8.0	204	7.5
245/45R18	100	W	XL	Y	676	245	8.0	210	8.0

MFS: Max Flange Shield (Rim Protection Feature)

ST-07



TREAD DESIGN

1. Twin centre grooves

Optimally positioned for optimal water drainage

2. Slash sipes

For lower noise level and faster water drainage

3. Aggressive Grooves

For efficient water drainage and good wet traction

4. Aqua disperse

Optimally positioned for draining water in all surface

SIZES AND DIMENSIONS

Sizes	LI	SS	XL/Std	MFS	Inflated Tire Dimension				Measuring Rim (Inch)
					OD (mm)	SW (mm)	NSD (mm)	TW (mm)	
155/80R13	79	T	Std	-	581	157	6.9	110	4.5
165/80R13	83	T	Std	-	594	165	8.0	126	4.5
155/70R13	75	T	Std	-	548	157	7.6	114	4.5
165/70R13	79	T	Std	-	562	170	7.6	126	5.0
175/70R13	82	T	Std	-	578	177	7.6	139	5.0
185/70R13	86	T	Std	-	592	189	7.0	136	5.5
165/65R13	77	H	Std	-	542	170	7.5	130	5.0
165/70R14	81	T	Std	-	588	170	7.6	118	5.0
175/70R14	84	T	Std	-	602	177	7.6	126	5.0
185/70R14	88	T	Std	-	616	189	8.0	150	5.5
195/70R14	91	T	Std	-	630	201	8.0	164	6.0
165/65R14	79	H	Std	-	570	170	7.8	138	5.0
175/65R14	82	H	Std	-	584	177	7.0	138	5.0
185/65R14	86	H	Std	-	596	189	8.0	150	5.5
185/60R14	82	H	Std	-	578	189	8.0	150	5.5
195/60R14	86	H	Std	-	590	201	8.0	164	6.0
185/55R14	80	H	Std	-	560	194	7.9	150	6.0
185/65R15	88	H	Std	-	621	189	8.0	150	5.5
195/65R15	91	H	Std	-	635	201	8.0	164	6.0
205/65R15	94	H	Std	-	647	209	8.0	182	6.0
195/60R15	88	H	Std	-	615	201	8.0	158	6.0
205/60R15	91	H	Std	-	627	209	8.0	166	6.0
205/60R16	92	H	Std	-	652	209	8.0	166	6.0
215/60R16	95	H	Std	-	664	221	8.0	173	6.5
225/60R16	98	H	Std	-	676	228	8.0	180	6.5

MFS: Max Flange Shield (Rim Protection Feature)

ST-08



PERFORMANCE FEATURES

Excellent Wet Traction

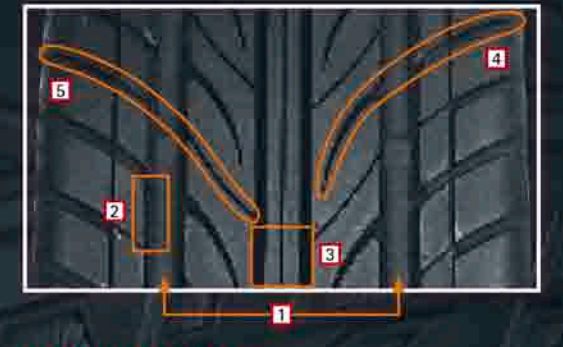
- Two straight wide grooves provide faster water drainage

High Gripping Power

- High grip silica cap compound for wet grip and reduced rolling resistance
- Wider slots at the shoulders enhance gripping and water drainage

Quiet and Comfortable

- Phase shifted tread
- Triple pitching blocks to minimize noise level
- Additional sipes on shoulders to reduce noise and enhance cooling



TREAD DESIGN

Shoulder Grooves:

1. Two shoulder grooves for faster water drainage
2. Tapered groove walls

Tread Center Area:

3. Two center grooves for stable handling and water drainage

Shoulder Area:

4. Wider side slots for traction both wet and dry
5. Additional siping for reducing noise

SIZES AND DIMENSIONS

Sizes	LI	SS	XL/Std	MFS	Inflated Tire Dimension (mm)				Measuring Rim (Inch)
					OD	SW	NSD	TW	
215/35Zr18	84	W	XL	MFS	607	218	8.0	200	7.5
215/40Zr18	89	W	XL	MFS	629	218	8.0	200	7.5
225/40Zr18	92	W	XL	MFS	637	230	8.0	210	8.0
235/40Zr18	95	W	XL	MFS	645	241	8.2	220	8.5
235/50Zr18	101	W	XL	MFS	693	245	8.2	220	7.5
235/55Zr18	104	W	XL	MFS	715	245	8.2	220	7.5
235/60R18	107	W	XL	MFS	739	240	8.4	200	7.0
205/40Zr17	84	W	XL	MFS	596	212	8.0	195	7.5
215/40Zr17	87	W	XL	MFS	604	218	8.0	198	7.5
205/45Zr17	88	W	XL	MFS	616	206	8.0	197	7.0
215/45Zr17	91	W	XL	MFS	626	213	8.0	202	7.0
225/45Zr17	94	W	XL	MFS	634	225	8.2	210	7.5
235/45Zr17	97	W	XL	MFS	644	236	8.0	215	8.0
205/50R17	93	W	XL	MFS	638	214	8.0	193	6.5
215/50R17	95	W	XL	MFS	648	226	8.0	202	7.0
225/50R17	98	W	XL	MFS	658	233	8.2	205	7.0
215/55R17	98	W	XL	MFS	668	226	8.0	206	7.0
225/55R17	101	W	XL	MFS	680	233	8.2	215	7.0
235/55R17	103	W	XL	MFS	690	245	8.2	223	7.5
205/45Zr16	87	W	XL	MFS	590	206	8.0	190	7.0
205/50R16	87	W	Std	MFS	612	214	8.0	192	6.5
225/50R16	92	W	Std	MFS	632	233	8.2	210	7.0
205/55R16	94	W	XL	MFS	632	214	8.0	195	6.5
215/55R16	97	W	XL	MFS	642	226	8.0	205	7.0
225/55R16	99	W	XL	MFS	654	233	8.2	211	7.0
195/50R15	82	V	Std	MFS	577	201	8.0	180	6.0
185/55R15	82	V	Std	MFS	585	194	7.8	175	6.0
195/55R15	85	V	Std	MFS	595	201	8.0	180	6.0

MFS: Max Flange Shield (Rim Protection Feature)



Active Silica Compound

- Improve wet grip
- Lower rolling resistance
- Improved fuel economy